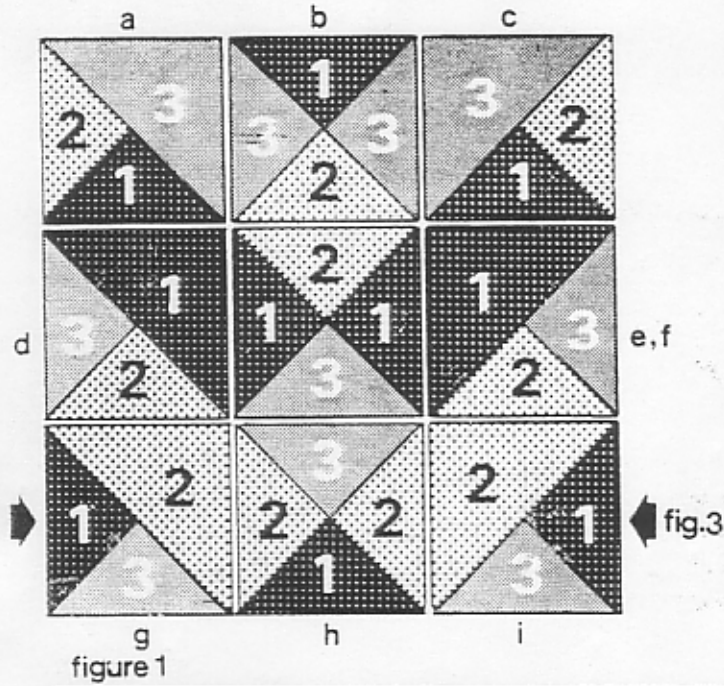


No.304

ON THE LEVEL



ON THE LEVEL
There are nine pieces, (a-i): three rows of three. Each piece has three levels, (fig. 2). Notice that all sides of each piece must meet the sides of adjoining pieces at **EXACTICALLY THE SAME LEVEL** (fig. 1). Also the opposite ends of each row and file must meet at exactly the same level. (fig. 3).